

# PagePro 1250E Laser Printer



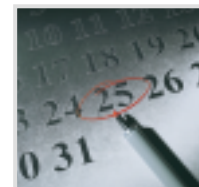
**Speedy, affordable laser printer for business**  
**Networkable, compatible, and versatile**  
**High resolution without high cost**

**MINOLTA**  
**QMS**

The essentials of imaging

[www.minolta-qms.com](http://www.minolta-qms.com)

# Big printing features for small business budgets



## Today's agenda: Do More with Less

Your business must operate more efficiently than ever before just to keep up with your competition. To break out of the pack and take the lead, you need office equipment that enables you to do more with fewer resources. You work hard for every dollar you earn and you expect these resources to do the same for you. The **PagePro™ 1250E** is the printer that can handle the pace you've set for your business.

## Business Basics

- Print speeds of up to 17 pages per minute mean the **PagePro 1250E** won't be late to deliver your important documents.
- Connect your computer to either the parallel or USB interface. Whether you choose a PC or Macintosh, you'll start printing sooner on a **PagePro 1250E**!
- Concerned about compatibility? With both PCL® 6 and PostScript® emulations, the **PagePro 1250E** works with just about any application you use.



**PagePro 1250E**

## Productivity Keeps You On Schedule

- Add the optional 500-sheet Lower Feeder and load the **PagePro 1250E** with more than a ream of paper to print more documents with fewer interruptions.
- Load all trays with any size paper and don't worry about printing on the wrong size. Automatic paper size selection means the **PagePro 1250E** lets you know if it can't find the size you've specified.
- Need to print but you've got other tasks to do? The **PagePro 1250E** includes jam recovery so you won't worry about unattended printing.

## Quality and Reliability

- High resolution 1200 x 1200 dpi printing on the **PagePro 1250E** produces documents that present your business in the most professional way.
- Durable 15,000 prints per month duty cycle means the **PagePro 1250E** has the muscle to handle your printing requirements.
- Full one-year exchange warranty gives you peace of mind knowing your **PagePro 1250E** is the best investment you can make.



**PagePro 1250E**  
with Optional 500-sheet Lower Feeder  
and Face-up Output Tray



# basics

# options

## Consumables

- Easily accessible, high-capacity consumables

## Interfaces

- USB,  
IEEE 1284 parallel

## Print speed

- 17 ppm (letter)

## Memory

- 16 MB RAM

## Printer emulations

- PCL 6, PCL 5e, PostScript Level 2

## Paper size and input

- up to letter/legal/A4
- 250-sheet cassette
- single-sheet manual feed

## Network connectivity

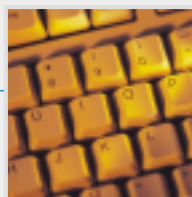
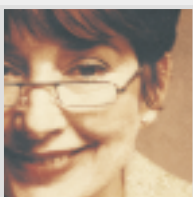
- Add an external network adapter and share the PagePro 1250E with others in your work-group or business

## Memory

- Upgradeable to 144 MB

## Paper input

- Add a 500-sheet cassette for longer printing without interruption





# PagePro 1250E Print System – Technical

## Printing Process

**Print Method:** electrophotographic laser  
**Print Speed:** up to 17 ppm (letter)  
**Resolution:** 1200 x 1200 dpi  
**Recommended Duty Cycle:** 15,000 prints per month maximum

## Hardware and Software Capabilities

**Processor Type:** 75 MHz PowerPC CPU  
**Memory:** 16 MB SDRAM on controller upgradeable to 144 MB (one slot)  
**Standard Emulations:** PCL 5e, PCL 6 with PjL, and PostScript Level 2

## Interface Support

**Standard Interfaces:** All interfaces receive data simultaneously  
**Standard Interfaces:** USB and IEEE 1284 parallel (supports Microsoft® 'Plug and Play')  
**Optional Interfaces:** Compatible with external Ethernet and wireless network adapters available from other manufacturers

## Paper Handling

**Standard Paper Input:** 250-sheet cassette, single-sheet adjustable manual feed  
**Optional Paper Input:** 500-sheet cassette  
**Standard Paper Output:** 100-sheet face-down output tray  
**Optional Paper Output:** 20-sheet face-up output tray  
**Paper Sizes Supported:** Letter, Legal, Executive/Invoice, Statement, A4, A5, B5 (JIS), B5 (ISO), 16K (Chinese), 32K (Chinese), COM 10 envelope, Monarch envelope, C5 envelope, C6 envelope, DL envelope, Chou 3 envelope, Chou 4 envelope, Japanese Postcard, Custom  
**Duplex Printing:** manual  
**Convenience Copying:** (optional) SC-110 digital copier/scanner  
**Printable Area:** Guaranteed: 4 mm from all edges of the paper  
**Paper Weights:** Plain paper: 16 - 24 lb. Bond (60 - 90 g/m<sup>2</sup>); Thick stock: 24 - 90 lb. (90 - 163 g/m<sup>2</sup>)  
**Print Media:** Plain paper, thick stock, OHP transparencies, laser-quality labels, and envelopes

## Physical

**Type:** Laser printer with internal controller  
**Dimensions w/output tray extended (WxDxH):** 15.32" x 17.36" x 10.2" (389 mm x 441 mm x 259 mm)  
**Weight (without shipping carton):** 15.4 lbs. (7 kg)  
**Carton Dimensions (WxDxH):** 23.2" x 14.8" x 15.1" (590 mm x 375 mm x 383 mm)

## Model Specific Features

Features/Model	PagePro 1250E
Print Speed	17 ppm
Resolution	1200 x 1200 dpi
RAM Memory	16 MB (max. 144 MB)
Memory sockets	1
Network Adapter	○
250-Sheet Cassette	●
Single-Sheet Manual Feed	●
500-Sheet Cassette	○
Manual Duplexing	●

○ Optional ● Standard

**Weight (as shipped):** 27.34 lbs. (12.4 kg)

## Electrical

**Power Requirements:**  
100V Model: 100 VAC ±10%, 50/60 Hz ±3%  
120V Model: 120 VAC ±10%, 50/60 Hz ±3%  
220/240V Model: 220/240 VAC ±10%, 50/60 Hz ±3%  
**Max. Power Consumption (100/120V):** 810 W / 840 W max  
**Max. Power Consumption (220V/240V):** 850 W max  
Energy Star Compliant\*

## Environmental

**Temperature Requirements:** Operating: 50° to 95° F (10° to 35° C); Non-operating: 32° to 95° F (0° to 35° C)  
**Humidity:** Operating: 15% to 85% RH  
Non-operating: 10% to 85% RH  
**Noise Levels:** Operating: <62 dB(A)

## Regulatory/Safety Conformity

UL, cUL, EU, CB International, NOM (Mexico), FCC Class B, Industrie Canada Class B, EU Class B, VCCI Class B, CE markings for EU and Australia, Energy Star (US and Japan).

## Consumables

**Starter:** Monocomponent dry toner cartridge yields up to 1,500 pages (A4/Letter) at 5% coverage, continuous printing.  
**Replacement:** Monocomponent dry toner cartridge yields up to 3,000 pages (A4/Letter) pages at 5% coverage, continuous printing.  
**High-Yield Replacement:** Monocomponent dry toner cartridge yields up to 6,000 pages (A4/Letter) pages at 5% coverage, continuous printing.  
OPC Drum: 20,000 pages, continuous printing

The stated life expectancy of each consumable in your printer is based on printing under specific operating conditions such as page coverage for a particular page size (5% coverage of letter/A4). The actual consumables life will vary depending on the use and other printing variables including page coverage, page size, media type, continuous or intermittent printing, ambient temperature and humidity.

## Typefaces

80 PCL fonts, 80 resident PostScript fonts

## Warranty Period and Conditions

1 year (exchange)



**MINOLTA-QMS Corporate Office**  
**MINOLTA-QMS, Inc.**  
**(USA, Canada, Latin America)**  
Tel.: +1 (251) 633 4300  
Fax: +1 (251) 639 4490

**MINOLTA-QMS Asia**  
Tel.: (+61) 2 - 9884 9966  
Fax: (+61) 2 - 9885 9977

**MINOLTA-QMS Australia**  
Tel.: (+61) 2 - 9884 9966  
Fax: (+61) 2 - 9884 9977

**MINOLTA-QMS Benelux**  
**(The Netherlands, Belgium, Luxembourg)**  
Tel.: (+31) 0 30 2481200  
Fax: (+31) 0 30 2481211

**MINOLTA-QMS Denmark**  
Tel.: (+45) 72 - 21 21 21  
Fax: (+45) 72 - 21 21 22

**MINOLTA-QMS France**  
Tel.: (+33) 01-41-07-93-93  
Fax: (+33) 01-40-83-01-10

**MINOLTA-QMS GmbH**  
**(Germany, Austria, Switzerland)**  
Tel.: (+49) 89/63 02 67-0  
Fax: (+49) 89/63 02 67-67

**MINOLTA-QMS Iberica**  
**(Spain, Portugal)**  
Tel.: (+34) 916 220036  
Fax: (+34) 916 220037

**MINOLTA-QMS Italy**  
Tel.: (+39) 0 02 - 39 011 1  
Fax: (+39) 0 02 - 39 011 219

**MINOLTA-QMS Japan**  
Tel.: (+81) 3 5439 2700  
Fax: (+81) 3 5439 2710

**MINOLTA-QMS Sweden**  
Tel.: (+46) 8 - 627 7500  
Fax: (+46) 8 - 627 7607

**MINOLTA-QMS South Africa**  
Tel.: (+27) 011 - 249 4000  
Fax: (+27) 011 - 249 4039

**MINOLTA-QMS UK**  
**(UK, Ireland)**  
Tel.: (+44) 1784 - 442255  
Fax: (+44) 1784 - 461641

**For all other countries:**  
**MINOLTA-QMS Europe,**  
**Middle East, Africa**  
Tel.: (+31) 0 30 2481200  
Fax: (+31) 0 30 2481211

**Websites:**  
www.minolta-qms.com  
www.q-shop.com

©2002 MINOLTA-QMS, Inc. All rights reserved. Specifications are subject to change without notice. The MINOLTA-QMS logo is a registered trademark of MINOLTA-QMS, Inc. PagePro is a trademark of Minolta Company, Ltd. All other trademarks or registered trademarks are the property of their respective owners. Images provided by kind courtesy of digitalvisiononline.com. 5/02

\* The addition of some options, in some combinations may cause the product to become non-compliant. Energy Star compliance does not represent an EPA endorsement of any product or service.



PN: PP1250ESs5\_02